



* External Lens Control / Heater on request

ADV-Ee69WN / ADV-Ee69WP

OUTDOOR IR BULLET CAMERA

FEATURES

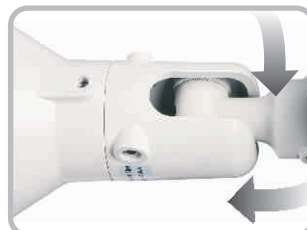
- Built with ADVERT RayGold Board
- SONY Effio-e 960H CCD & D.S.P
- High Resolution 700TVL Color & 750TVL B/W
- 2.8~12mm Auto-Iris lens
(3~12mm, 5~50mm Auto-Iris Japan lens Optional)
- Lux Image Capture Color : 0.1 Lux@ F1.2, B/W : 0.08 Lux @ F1.2
- Noise Free Image at Low Light with 2DNR
- Professional Setup with Built-in OSD Menu
- ATR Adaptive Tone-curve Reproduction (D-WDR)
- BLC and HLC (Configurable High Illumination Mask)
- SEVEN Types of White Balance (ATW, PUSH, USER1, USER2, ANTI COLLOR ROLLING, MANUAL, PUSH LOCK)
- Selectable Day(Color) / Night(B/W)
- Video Motion Detection (4 Areas)
- 2DNR Noise Rejection (For Saving HDD Space During Motion Recording)
- Selectable Privacy Mask Zones (Max.4 Areas)
- Eight Types of Languages Setting (Chinese, English, French, German, Japanese, Portuguese, Russian & Spanish)
- High Performance 60 IR LEDS for (0 Lux) up to 40 Meter Night Vision
- Lowest Power Consumption (90mA at Day Time, 540mA at Night Time with IR LED On)
- Lowest Heat on Board for Long Life of Camera
- 3 Axis Wall Mount and IP66 Housing with Cable Management



Outdoor Application



Indoor Application



3Axis Wall Mount



External Focus Adjustment

ADV-Ee69WN ADV-Ee69WP

OUTDOOR IR BULLET CAMERA

Digital Wide Dynamic Range

ULTRA HIGH RESOLUTION



CONVENTIONAL CAMERA

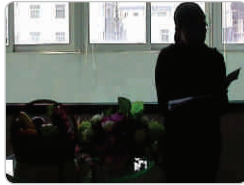


700TVL

D-WDR (DIGITAL WIDE DYNAMIC RANGE)



DIGITAL WDR ON



DIGITAL WDR OFF

HI-ILLUMINATION MASK FOR CAR PLATE RECOGNITION



HI-MASK OFF + IR ON



HI-MASK ON + IR OFF

SENS-UP GAIN STEP (STAR LIGHT CAMERA)

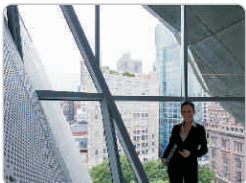


CONVENTIONAL CAMERA



SENS-UP ON

BLC (BACK LIGHT COMPENSATION)



OFF

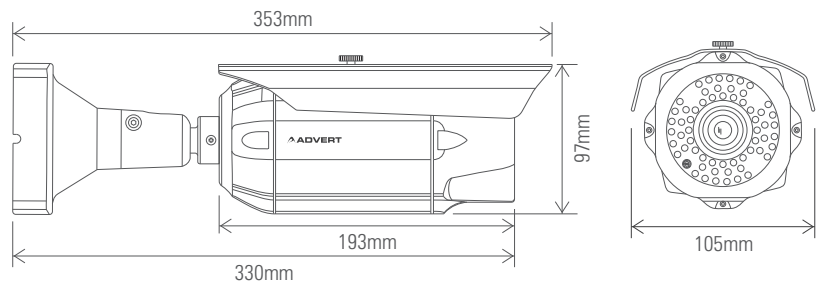


ON

TECHNICAL SPECIFICATIONS

Model	ADV-Ee69WN	ADV-Ee69WP
System	NTSC	PAL
Image Sensor	SONY Effio-e 960H CCD & D.S.P	
Lens Type	2.8~12mm Auto-Iris lens (3~12mm, 5-50mm, Auto-Iris Japan	
Scanning System	lens Optional) 2:1 Interlace	
Scanning Frequency (H)	15734 Hz	15625 Hz
Scanning Frequency (V)	59.94Hz	50.00Hz
Sync. System	Internal	
Signal System	525 Lines	625 Lines
Total Effective Pixels	976(H) X 494(V)	976(H) X 582(V)
S/N Ratio	More than 52 dB (AGC OFF)	
Gamma	0.45 Default, Various Selectable with OSD	
Resolution	700 TVL Color& 750 TVL B/W	
Video Output Level	1.0 Vp-p (75 Ohms, Composite)	
Min. Illumination	0.1 Lux@F1.2 (Color Mode), 0.08 Lux@F1.2 (B/W Mode)	
Shutter Fixed	1/60 ~ 1/120,000 Sec. / FLK	1/50 ~ 1/100,000 Sec. / FLK
BLC	OFF / BLC / HLC	
ATR	ATR : Adaptive Tone-curve Reproduction Digital WDR	
AGC	AUTO (4 Steps)	
White Balance	ATW / PUSH / USER1 / USER2 / ANTI CR / MANUAL / PUSH LOCK	
Day / Night	COLOR / B & W / AUTO	
DNR	2D	
Motion Detection	ON / OFF (4 Programmable Zones)	
Privacy Zone	ON / OFF (8 Zones Programmable, Mosaic)	
Image Setup	OFF / V-FLIP / MIRROR / ROTATE / FREEZE / NEG. IMAGE	
Language	Chinese, English, French, German, Japanese, Portuguese, Russian & Spanish	
Reset	Factory Reset	
Pro. Functions Access	Five-way Switch OSD Control	
Infra Red LED 60 PCS.	Peak Wavelength	850 nm
	Beam Spread	60 °
	Radiant Distance	40 Meter
Power Supply	DC 12 V ± 1 V	
Current Consumption	90mA / 12V DC at Day Time, 540mA / 12V DC at Night Time with IR LED On	
I / O Connector	Video output: Molded (Pig Tail) BNC Connector and 12 VDC Input: DC Socket	
IP Rating	IP 66	
Operating Temp	-10 °C ~ +50 °C (14 °F ~ 122 °F)	
Dimensions	193.0mm (L) X X 105.0mm (W) X 97.0mm (H)	
Weight	Approx. 1150 g	

DIMENSIONS



The above mentioned technical drawings are for reference only.
All dimensions are in millimeters.

Advert Technologies may, at any time and without notice, make changes or improvements to the products and services offered and/or cease producing or commercializing them. The Advert logo and Admin vision trademark are properties of Advert Technologies.

Authorised Dealer / Representative.

