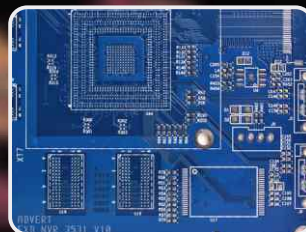
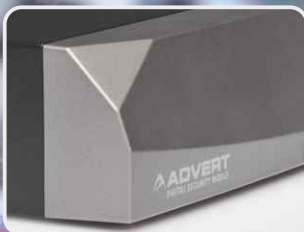


4CH, 8CH & 16CH NETWORK VIDEO RECORDER

ADN-0404-1080P-H1Lx
ADN-0808-1080P-H1Lx
ADN-0808-720P-H1Lx
ADN-0808-1080P-H1Px
ADN-1616-960P-H1Px



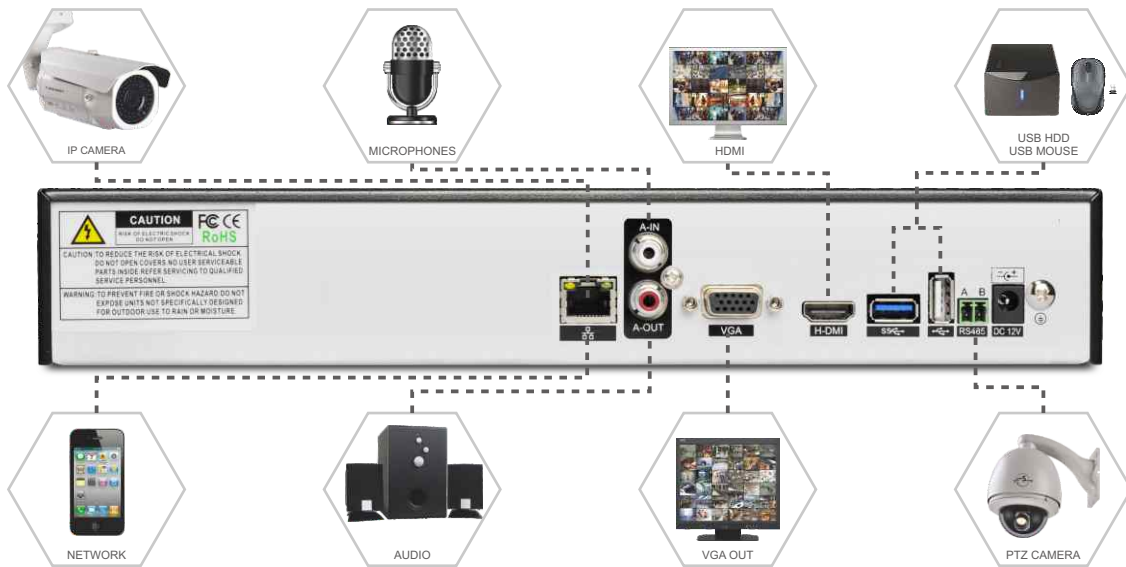
25FPS (PAL) / 30FPS (NTSC) each channel recording
H.264 dual-stream video compression
Support 255 channels CMS free
Support 2.0 USB memory(USB flash Disk, USB HDD, USB CD/DVD
Burner, etc.)
Easy backup method: network download to remote client

Support 10M/100M Network Interface
Web setting, playback and review, NVR status check
and video storage.
Fast and convenient shortcut operation: copy & paste
for the same settings
User Friendly GUI, remote control and mouse



ADN-0404-1080P-H1Lx / ADN-0808-1080P-H1Lx / ADN-0808-1080P-H1Px ADN-0808-720P-H1Lx / ADN-1616-960P-H1Px

4CH, 8CH & 16CH NETWORK VIDEO RECORDER

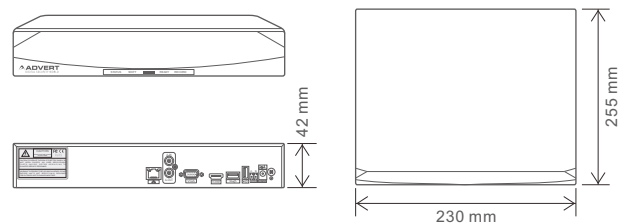


TECHNICAL SPECIFICATIONS

Model Number	ADN-0404-1080P-H1Lx	ADN-0808-1080P-H1Lx ADN-0808-720P-H1Lx	ADN-0808-1080P-H1Px ADN-1616-960P-H1Px
Video Parameter			
Video Compression	H.264 Main Profile		
Video Standard	PAL: 625 Line, 50f/s; NTSC: 525 Line, 60f/s		
Video Format	NTSC/PAL		
Recording	4*1080P / 8*D1	8*1080P / 8*720P / 16D1	4*3M / 8*1080P / 16*720P
Playback	1*1080P / 4*D1	1*1080P / 4*720P / 4*D1	1*3M / 2*1080P / 4*720P
Video Output	BNC, VGA & HDMI (Max. 1920*1080)		VGA & HDMI (Max. 1920*1080)
Audio Parameter			
Audio Compression	G711a		
Audio Input (RCA)	—		1CH
Audio Output (RCA)	1CH		
Interface			
USB (2.0)	2		
Network	RJ-45 (10M/100M)		
IR Remote	Support		
HDD Port	1 SATA port (Max. 4T)		
Operation			
CMS	Support		
IE Browser	Support		
Snapshot	Support		
Zoom	Support		
Mobile Monitor	Support		
Function			
Backup	USB, HDD, Network		
Alarm Mode	MD, VB, VL, AI, AO		
Alarm Handling	Message, Email, Buzzer, FTP		
Split Mode	1, 4	1, 4, 9	1, 4, 9, 16
Event Log	Support		
Search Mode	By Time, By Event Type		
DDNS	Support (Admin Vision)		
ONVIF	Support		
Network Service	PPPoE, NTP, DDNS, FTP		
DST Time	Support		
Others			
NVR Mode	4*1080P; 8*D1	8*1080P; 8*720P; 16*D1	4*3M; 8*1080P; 16*720P
Operating System	Embedded Linux		
Main Processor	Hi3515A	Hi3520D	Hi3535
Application	XP, Vista, Win7		
GUI	Support		
Mobile Software	Iphone, Ipad, Windows mobile, Android, Symbian, Blackberry, etc.		
Multi-Language	Support		
Working Temperature	0 - 55°C		
Size(mm)	L255 x W230 x H42		
Weight(kg)	≤1.0 (Without HDD)		

- 25FPS (PAL) / 30FPS (NTSC) each channel recording
- H.264 dual-stream video compression
- Support 255 channels CMS free
- Support 2.0 USB memory (USB flash Disk, USB HDD, USB CD/DVD Burner, etc.)
- Easy backup method: network download to remote client
- Support 10M/100M Network Interface
- Web setting, playback and review, NVR status check and video storage.
- Fast and convenient shortcut operation: copy & paste for the same settings
- User Friendly GUI, remote control and mouse
- Support free DDNS server: Admin Vision DDNS
- Networking method: PPPoE, NTP, DDNS, FTP, etc.
- Support 1 SATA port (Max. 4T)
- Support main mobile remote monitoring (Windows Mobile/Symbian/iPhone/iPad/ Android/BlackBerry, etc.)
- Support VGA & HDMI (Max. 1920*1080) video output

DIMENSIONS



The above mentioned technical drawings are for reference only.

* Both models describe the same equipment.

Advert Technologies may, at any time and without notice, make changes or improvements to the products and services offered and/or cease producing or commercializing them. The Advert logo and Admin vision trademark are properties of Advert Technologies.

Authorised Dealer / Representative.

ADVERT
DIGITAL SECURITY WORLD



www.adverttech.com

Print V1.0 2K14